

SCALE 100 FT. TO AN INCH

HAMMOND LUMBER CO.

-SAW, SHINGLE & PLANING MILLS & SHIPBUILDING PLANT-

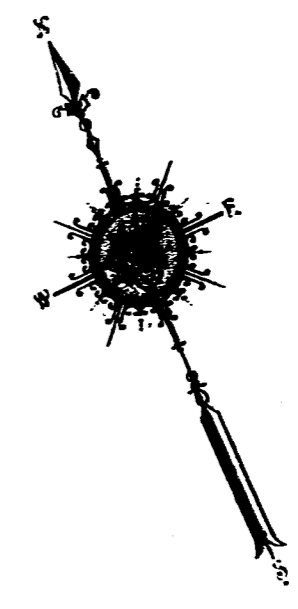
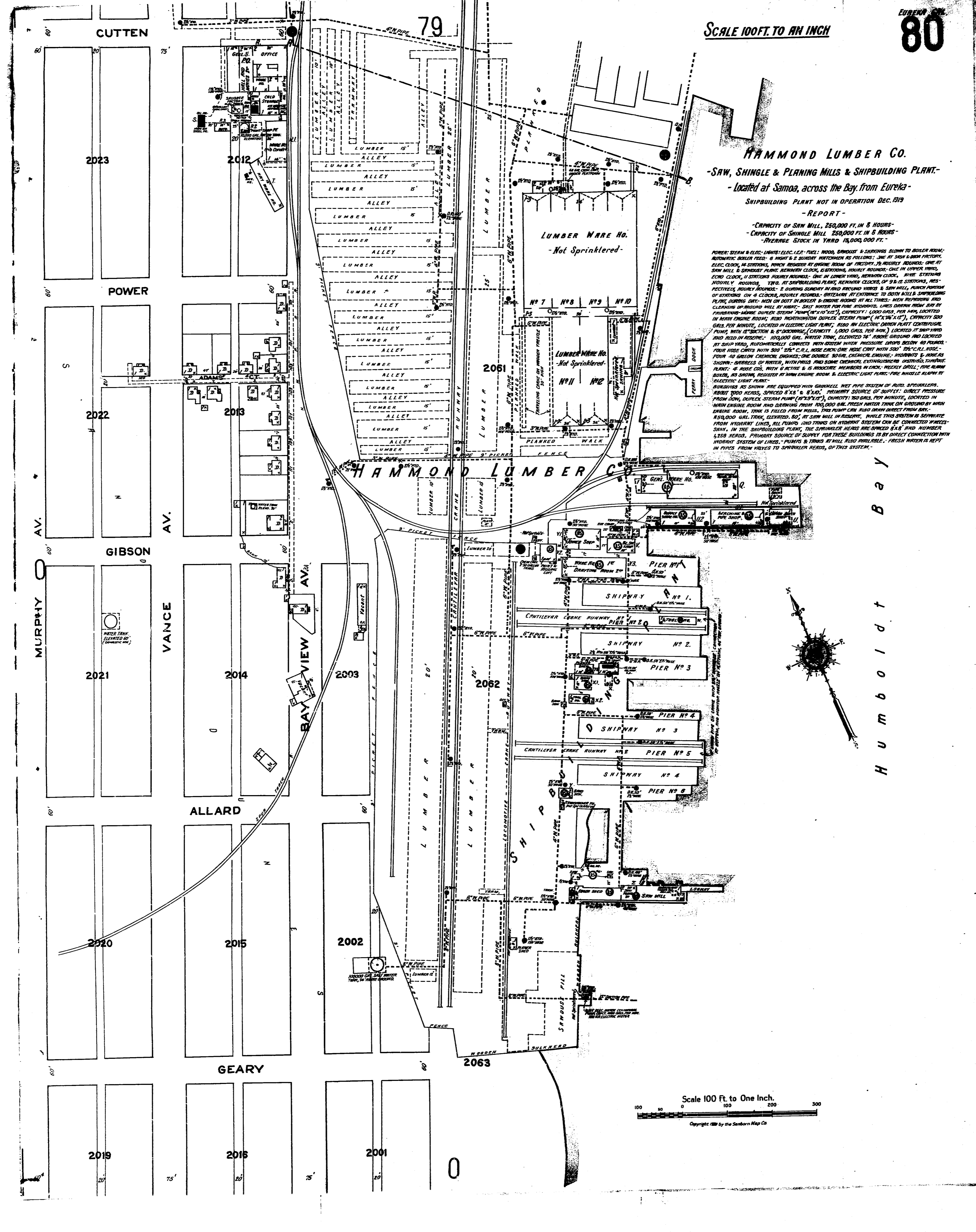
- Located at Samoa, across the Bay from Eureka -

SHIPBUILDING PLANT NOT IN OPERATION DEC. 1919

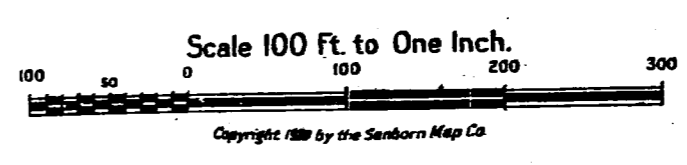
- REPORT -

- CAPACITY OF SAW MILL, 250,000 FT. IN 8 HOURS -
- CAPACITY OF SHINGLE MILL, 250,000 FT. IN 8 HOURS -
- AVERAGE STOCK IN YARD 15,000,000 FT. -

POWER: STEAM & ELEC. UNITS: ELEC. L.P. FUEL: WOOD, SAWDUST & SHAVINGS BURN TO BOILER ROOM; AUTOMATIC BOILER FEED; 6 NIGHT & 2 DAY WATERMANS AS FOLLOWS: ONE AT SAW & BOILER FACTORY, ELEC. CLOCK, 14 STATIONS, WHICH REGISTER AT ENGINE ROOM OF FACTORY, 78 HOURLY ROUNDS; ONE AT SAW MILL & SHIPBUILDING PLANT, NEARBY CLOCK, 15 STATIONS, HOURLY ROUNDS; ONE IN UPPER YARD, ELEC. CLOCK, 11 STATIONS, HOURLY ROUNDS; ONE IN LOWER YARD, NEARBY CLOCK, 15 STATIONS, HOURLY ROUNDS; TWO AT SHIPBUILDING PLANT, NEARBY CLOCK, OF 3 & 12 STATIONS, RESPECTIVELY, HOURLY ROUNDS; 2 DURING SUNDAY IN AND AROUND YARDS & SAW MILL, PORTION OF STATIONS ON 4 CLOCKS, HOURLY ROUNDS; WATERMANS AT ENTRANCE TO BOTH MILL & SHIPBUILDING PLANT, DURING DAY; MEN ON DUTY IN BOILER & ENGINE ROOMS AT ALL TIMES; MEN REPAIRING AND CLEANING OF BOUNDARY WALL AT NIGHT; SAW WATER FOR FIRE HYDRANTS, LINES DRAWN FROM SAW BY HYDRANTS-ROSE DUPLEX STEAM PUMP (10"x10"x12"), CAPACITY: 1,000 GALS. PER MIN. LOCATED IN MAIN ENGINE ROOM; ALSO PORTLAND CEMENT STEAM PUMP (10"x10"x12"), CAPACITY 500 GALS. PER MINUTE, LOCATED IN ELECTRIC LIGHT PLANT; ALSO AN ELECTRIC DRIVEN PLANT CENTRIFUGAL PUMP WITH 12" SECTION & 8" DISCHARGE (CAPACITY 1,000 GALS. PER MIN.) LOCATED AT SHIP YARD AND KEYS IN RESERVE; 100,000 GAL. WATER TANK, ELEVATED 24' ABOVE GROUND AND LOCATED AT SHIP YARD, AUTOMATICALLY CONNECTS WITH SYSTEM WHEN PRESSURE DROPS BELOW 40 POUNDS; FOUR 40 GALLON CHEMICAL ENGINES; ONE DOUBLE 30 GAL. CHEMICAL ENGINE; HYDRANTS & HOSES AS SHOWN; BARRELS OF WATER, WITH PAILS AND SOME CHEMICAL EXTINGUISHERS; SHIPBUILDING PLANT: 4 HOSE CO'S, WITH 6 ACTIVE & 6 RESERVE MEMBERS IN EACH; REEPLY DRILL; FIRE ALARM BELL, AS SHOWN, REGISTER AT MAIN ENGINE ROOM & ELECTRIC LIGHT PLANT; FIRE WHISLE ALARM AT ELECTRIC LIGHT PLANT; BUILDINGS AS SHOWN ARE EQUIPPED WITH GRANNELL NET PIPE SYSTEM OF AUTO. SPRINKLERS, ABOUT 1000 HEADS, SPACED 8' X 8' & 8' X 10', PRIMARY SOURCE OF SUPPLY: DIRECT PRESSURE FROM 1000, DUPLEX STEAM PUMP (10"x12"), CAPACITY: 200 GALS. PER MINUTE, LOCATED IN MAIN ENGINE ROOM AND DRAWING FROM 100,000 GAL. FRESH WATER TANK ON GROUND BY MAIN ENGINE ROOM; TANK IS FILLED FROM WELLS, THIS PUMP CAN ALSO DRAW DIRECT FROM SAW; 150,000 GAL. TANK, ELEVATED 80', AT SAW MILL IN RESERVE; WHILE THIS SYSTEM IS SEPARATE FROM HYDRANT LINES, ALL PUMPS AND TANKS ON HYDRANT SYSTEM CAN BE CONNECTED W/RESERVE SHAW; IN THE SHIPBUILDING PLANT, THE SPRINKLER HEADS ARE SPACED 8' X 8' AND NUMBER 1 & 2 HEADS, PRIMARY SOURCE OF SUPPLY FOR THESE BUILDINGS IS BY DIRECT CONNECTION WITH HYDRANT SYSTEM OF LINES, PUMPS & TANKS AT MILL ALSO AVAILABLE; FRESH WATER IS KEPT IN PIPES FROM VALVES TO SPRINKLER HEADS, OF THIS SYSTEM.



Humboldt Bay



Scale 100 Ft. to One Inch.

Copyright 1919 by the Sanborn Map Co.